

New Administrators Orientation

Denise B. Maybank, PhD
Vice President and Associate Provost
for Student Affairs and Services

*Henry Center
August 6, 2019*

POP QUIZ

What was the total student enrollment for the 2018-19 academic year?

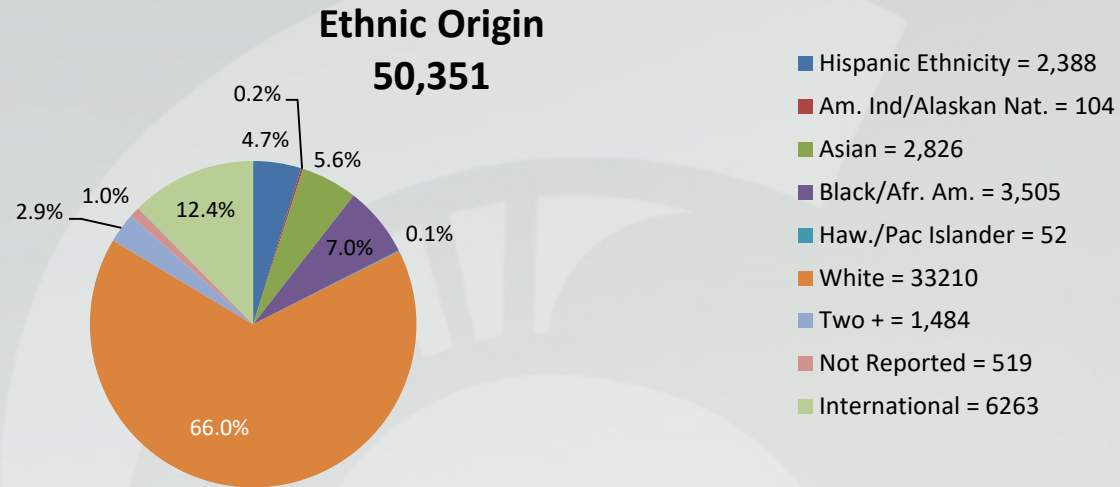
What was the total number of Registered Student Organizations (RSOs) for the 2018-19 academic year?

Name three units/departments that are a part of Student Affairs and Services.

**How many neighborhoods are there on campus?
List them**

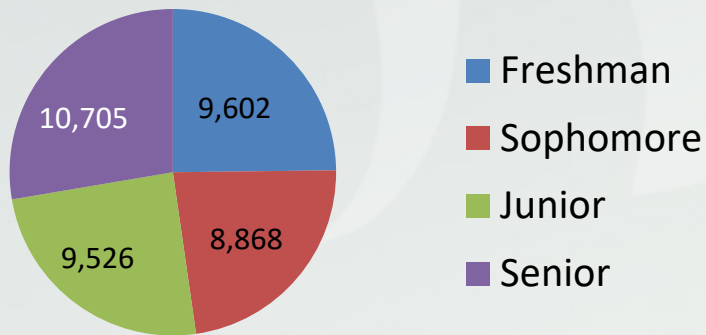
**What is the location of the Office of the Vice President and Associate Provost for Student Affairs and Services?
Name one additional location of a Student Affairs unit.**

Total Enrollment Fall 2018



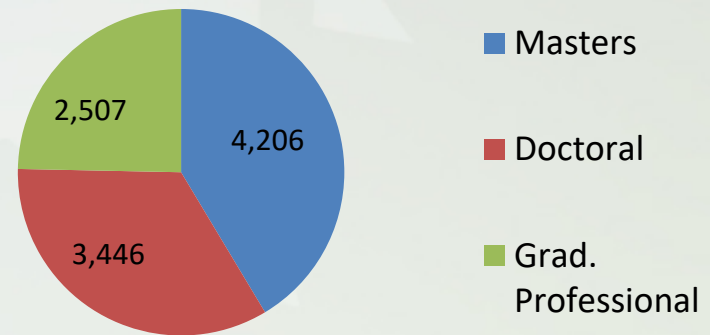
Undergraduate Enrollment

38,701



Graduate Enrollment

10,159





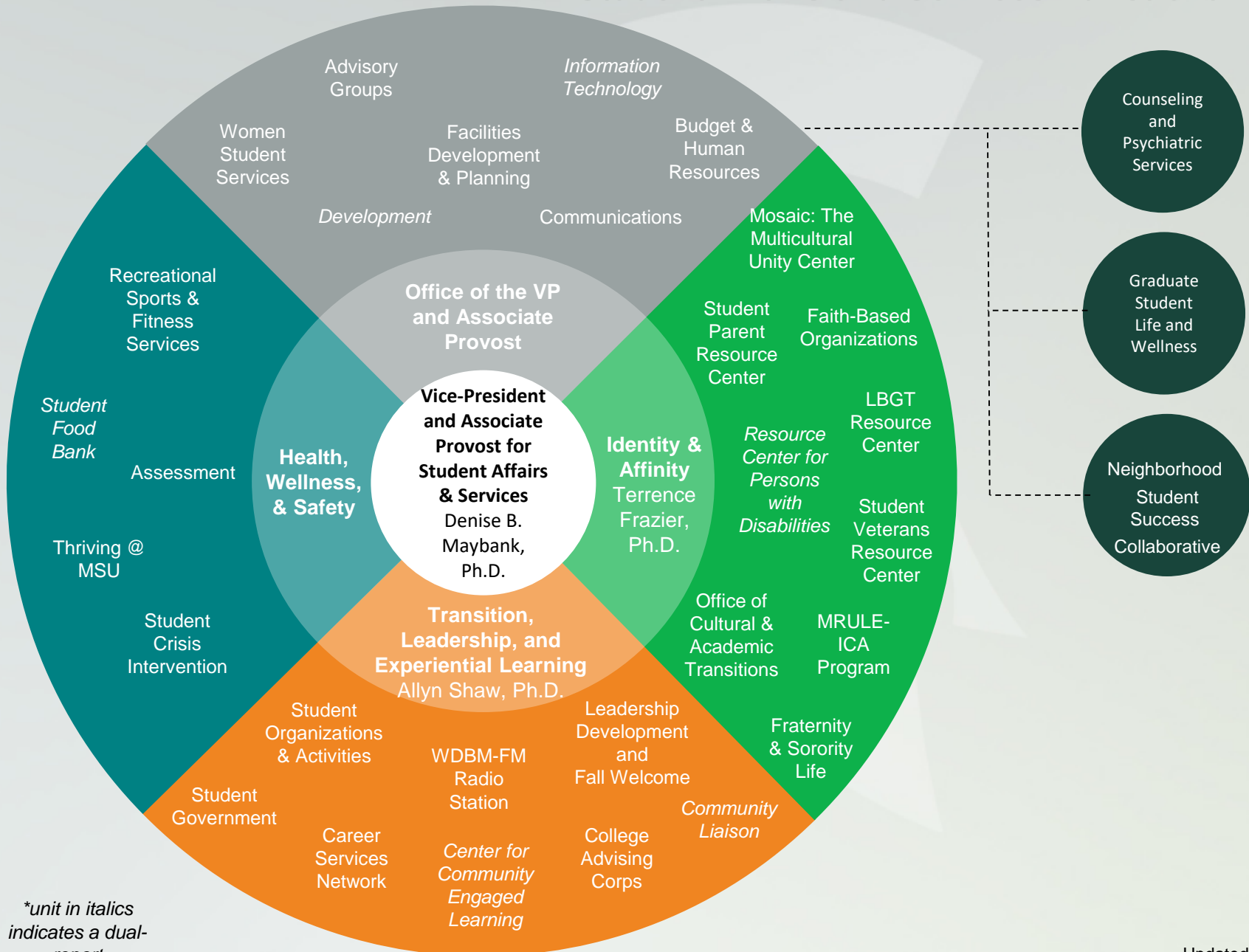
WE INSPIRE SPARTANS TO GROW!

Respectful

Responsive

Resourceful

Student Affairs and Services Functional Chart



*unit in italics indicates a dual-report



Identify one BIG issue about which students are or will be concerned.

Fall Watch

Relationship violence and sexual assault

Mental health concerns and services

Fraternity and Sorority Life

Student Activism

- First Amendment and Free Speech

- Transgender Student Concerns

Ongoing Political Issues

- Balance of support for conservative and liberal voices

- Immigration

“Spartans Helping Spartans”

- Food insufficiency

- Homelessness

If you want to go fast,
go alone.

If you want to go far,
go together.

- African Proverb -

Where to find us

Office of the Vice President and Associate Provost
for Student Affairs and Services

150 Student Services Building

(517) 355-7535

Website: <http://studentaffairs.msu.edu/>