

# New Administrators Orientation

Denise B. Maybank, PhD

Vice President for Student Affairs and Services

*Henry Center*

*August 7, 2018*

# POP QUIZ

**What was the total student enrollment for the 2017-18 academic year?**

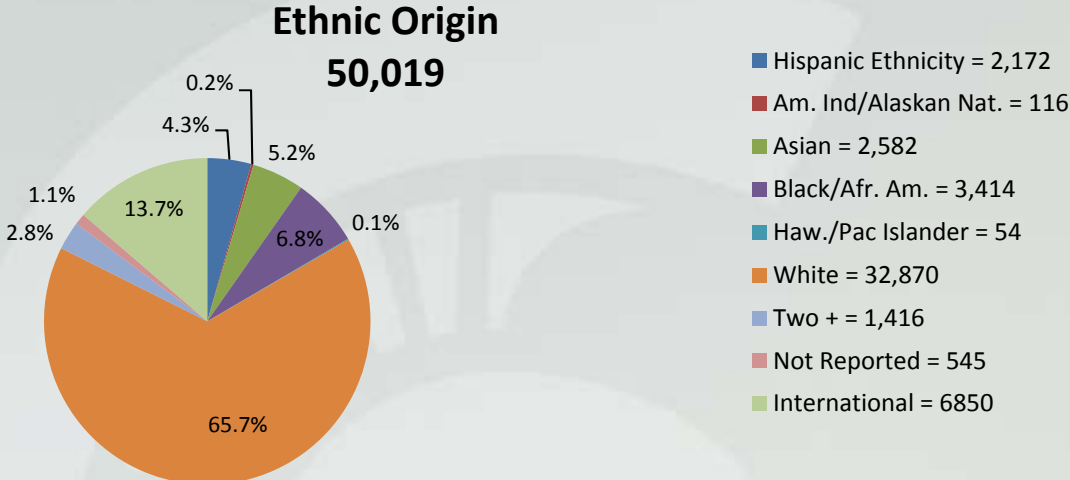
**What was the total number of Registered Student Organizations (RSOs) for the 2017-18 academic year?**

**Name three units/departments that are a part of Student Affairs and Services.**

**How many neighborhoods are there on campus?  
List them**

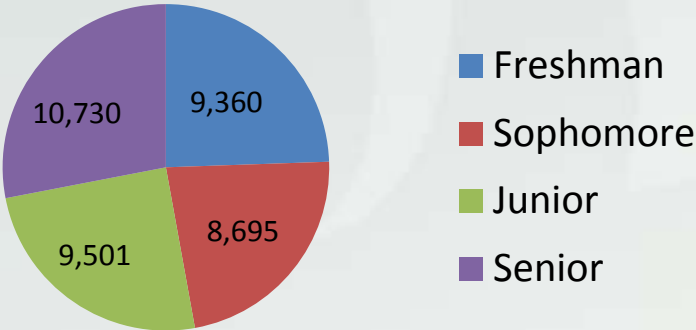
**Identify one BIG issue about which students are or will be concerned.**

• Total Enrollment Fall 2017



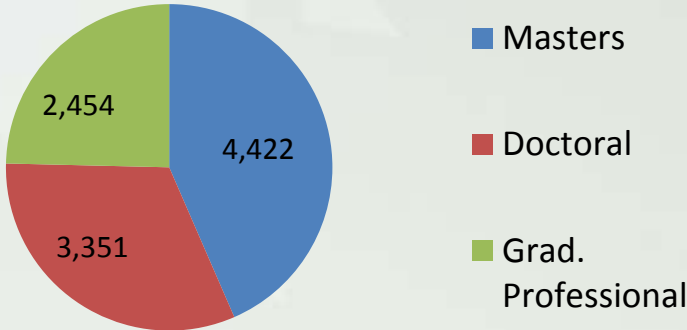
• Undergraduate

**Undergraduate Enrollment**  
**38,286**



• Graduate

**Graduate Enrollment**  
**10,227**



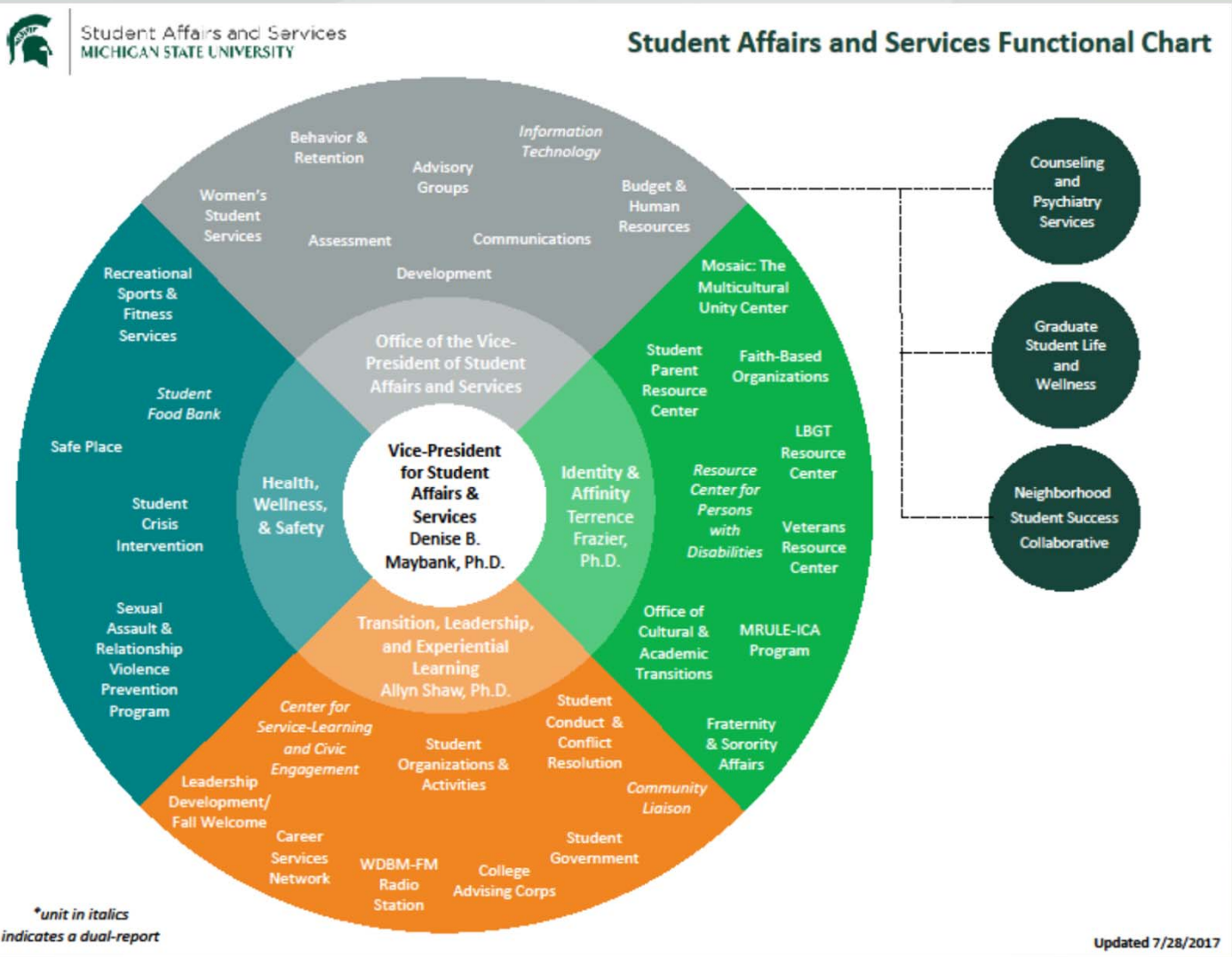


**WE INSPIRE SPARTANS TO GROW!**

**Respectful**

**Responsive**

**Resourceful**



# • Fall Watch

Relationship violence and sexual assault

Student Activism

First Amendment and Free Speech

Transgender Student Concerns

Ongoing Political Issues

Mid-term elections

Immigration

“Spartans Helping Spartans”

Food insufficiency

Homelessness

- Where to find us

Office of the Vice President for Student Affairs and Services  
150 Student Services Building  
(517) 355-7535

Website: <http://studentaffairs.msu.edu/>